

1 EXISTING SEATING PLAN
SCALE: 1/4" = 1'-0"

2 OCCUPANCY CALCULATIONS
N.T.S.

EXISTING INTERIOR SEATING COUNT	
DINING	
TOTAL OCCUPANCY	16
EXTERIOR SEATING COUNT	
SQ. FOOTAGE	127 sq.ft.
DINING	
TOTAL	8
at 15 sq. ft. per person complies with code	

3 ELEVATION OF EXTERIOR
SCALE: 1/4" = 1'-0"
Chairs shown in elevation are representational. Not all chairs shown for clarity.

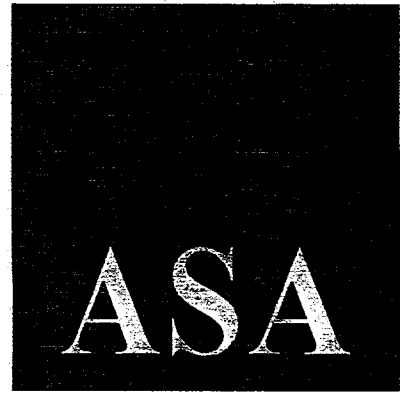
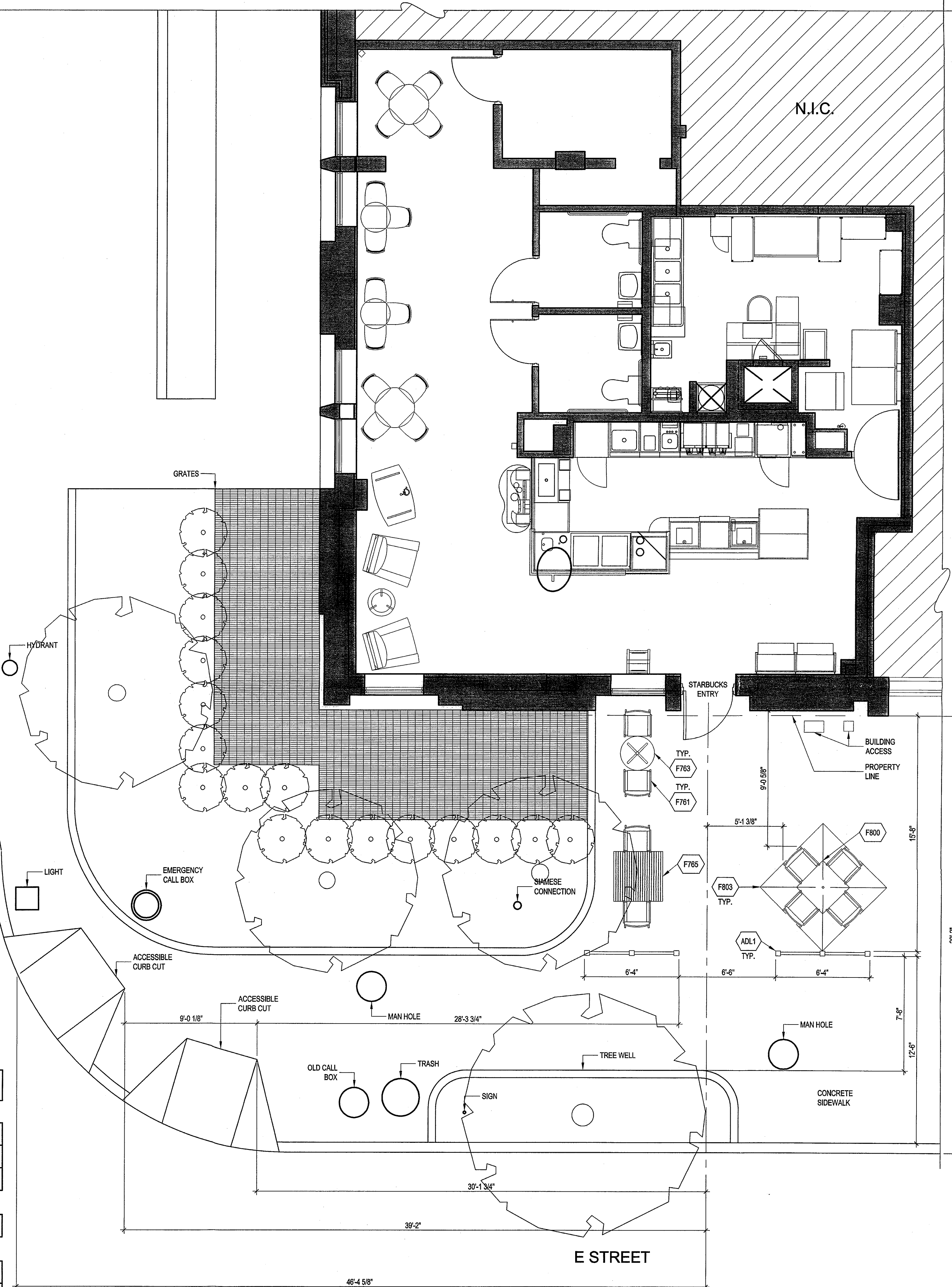


4 OUTDOOR FURNITURE SCHEDULE
N.T.S.

FURNITURE SCHEDULE:

ITEM#	QTY	DESCRIPTION	MANUFACTURER	MODEL #	REMARKS	SKU #	SHIP
TABLES							
F763	1	TABLE, PATIO ROUND METAL TOP	SMITH AND HAWKEN	896688		223250	3PL
F765	1	TABLE, PATIO ADA SQUARE METAL TOP	SMITH AND HAWKEN	896704		223240	3PL
F800	1	TABLE, PATIO SQUARE METAL TOP	T.B.D.	T.B.D.	30" X 30", HOLE IN CENTER FOR UMBRELLA	T.B.D.	
CHAIRS							
F761	8	CHAIR, PATIO METAL/WOVEN	SMITH AND HAWKEN	896654		223229	3PL
EXTERIOR							
F776	0	BASE UMBRELLA 6' 95 LBS	ULTIMATE UMBRELLA CO	SBUXACF95W		223127	3PL
F803	1	UMBRELLA 6' OUTDOOR LOGO	ULTIMATE UMBRELLA CO			394001	3PL
ADDITIONAL ITEMS							
ADL1	4	3'-0" RAILING	EF IRONWORKS	STEEL RAILING	PAINTED BLACK		GC

20TH STREET



ALAN SPARBER ARCHITECT
10712 BREWER HOUSE ROAD
NORTH BETHESDA, MARYLAND 20852
240.461.5017 / asparber@asarchitect.com

Restaurant Consultants
Incorporated

P.O. Box #141
COLLEGE PARK, MD 20741
PH: 410.827.9002

NOTES

PROFESSIONAL SEAL

SEALED BY: ALAN SPARBER

PROFESSIONAL CERTIFICATION. I CERTIFY THAT THESE DOCUMENTS WERE PREPARED OR APPROVED BY ME, AND THAT I AM A DULY LICENSED ARCHITECT UNDER THE LAWS OF THE DISTRICT OF COLUMBIA, LICENSE NUMBER 2629, EXPIRATION DATE: 04/30/2011.

SUBMITTALS

NO.	DESCRIPTION	DATE
1	ISSUED FOR PERMIT	10/18/10
2	LANDLORD REVISIONS	01/10/11

STARBUCKS 20TH & E

1957 E STREET, NW
WASHINGTON, D.C. 20415

OUTDOOR SEATING PLAN

SCALE: AS NOTED
MANAGER: AS
DRAFTSMAN: DAS
FILE: 8666 A-1
SHEET: 1 OF 1
PROJ. #: SB 8666

A-1

Approved plan

THESE DRAWINGS ARE THE PROPERTY OF THE HESBERMAN GROUP, LLC. UNAUTHORIZED REPRODUCTION FOR ANY PURPOSE IS AN INFRINGEMENT UPON COPYRIGHT LAWS. VIOLATORS WILL BE SUBJECT TO PROSECUTION BY FULLEST EXTENT OF LAW.