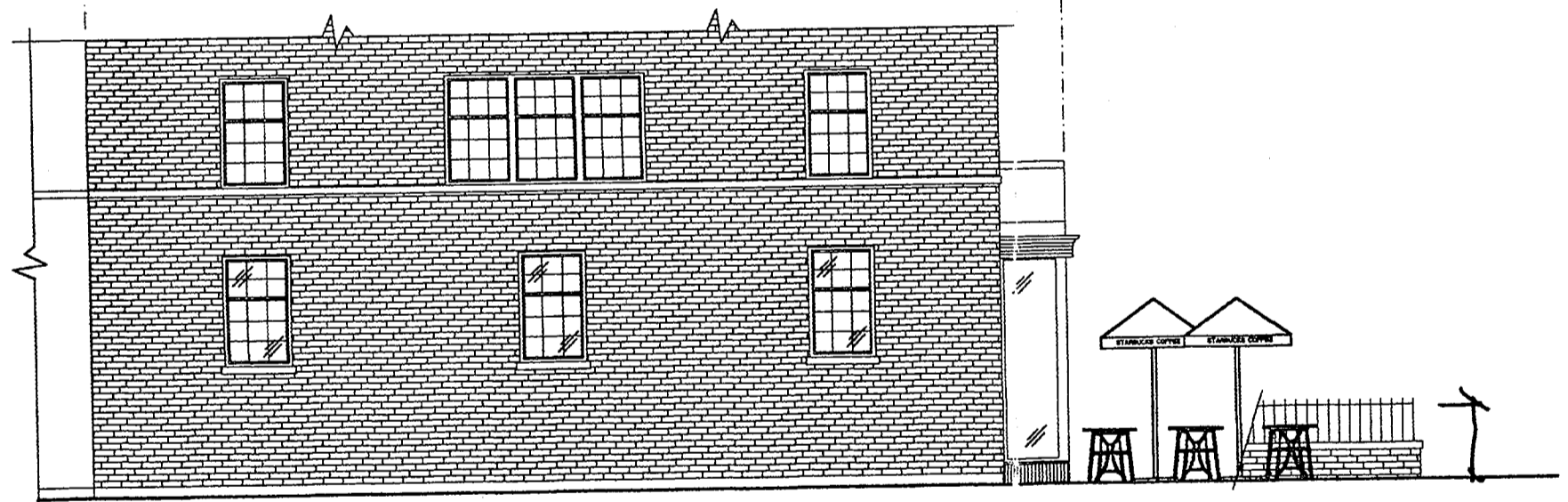
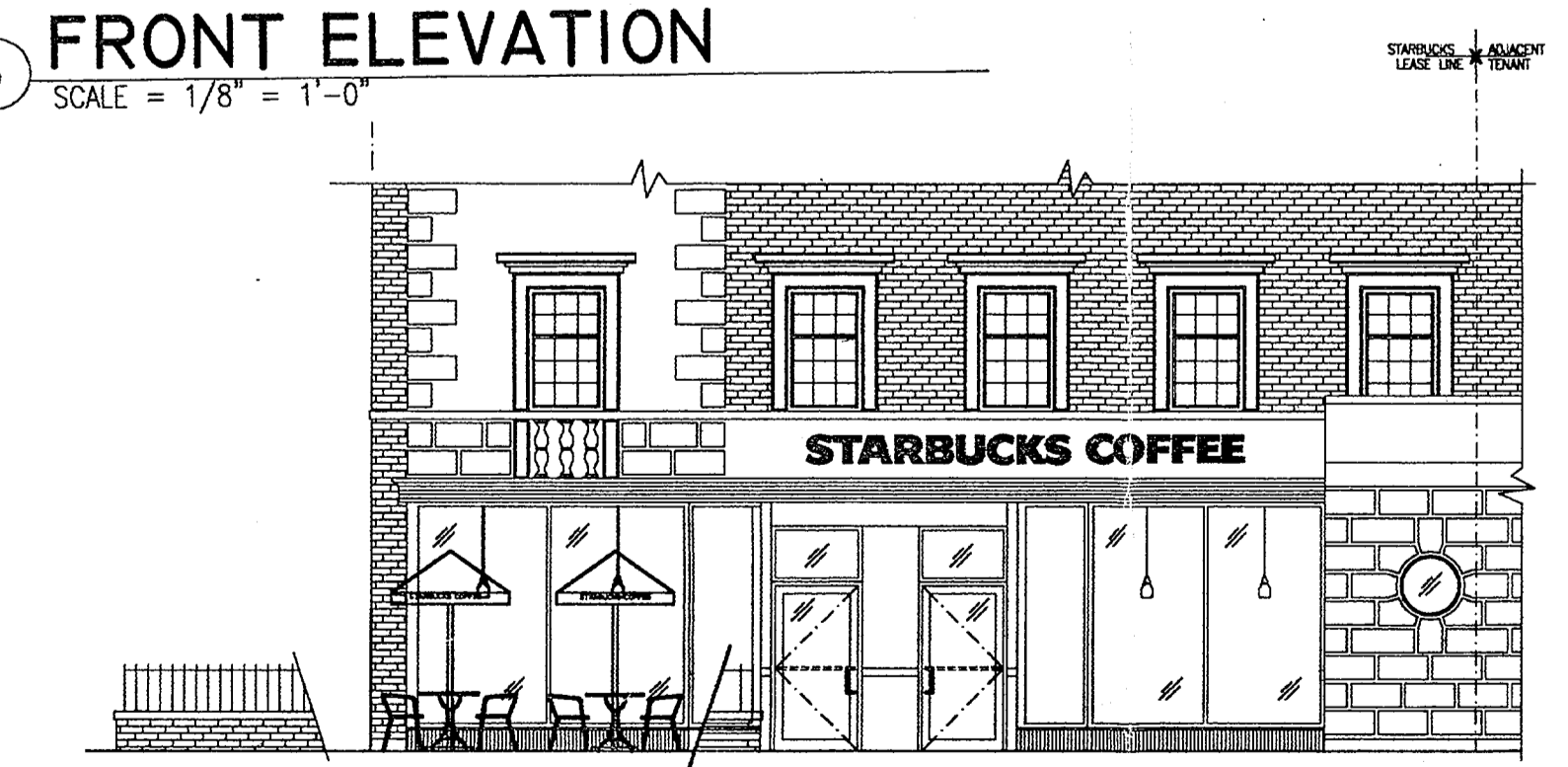


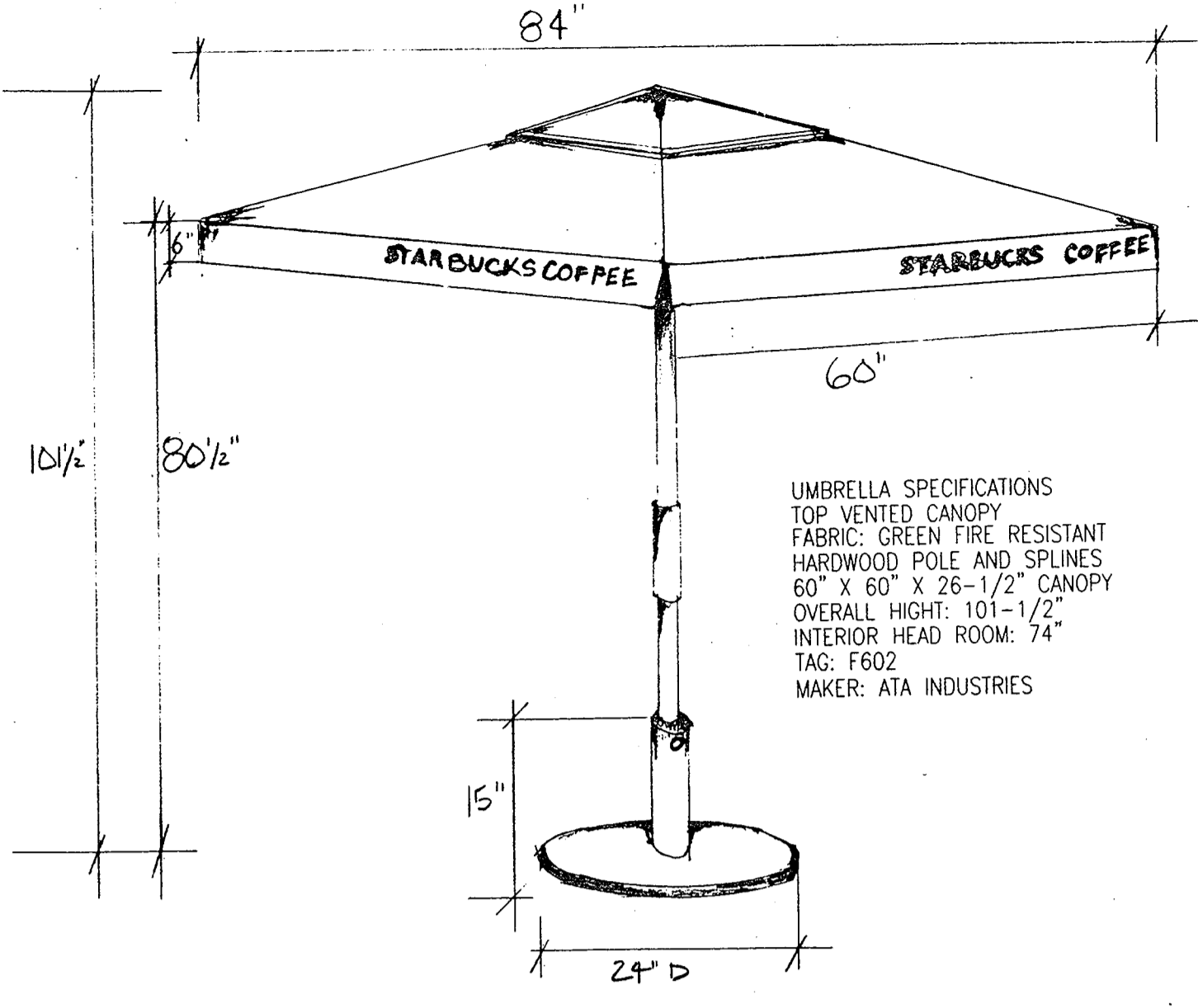
2 SITE PLAN  
SCALE = 1/4" = 1'-0"



4 SIDE ELEVATION  
SCALE = 1/8" = 1'-0"



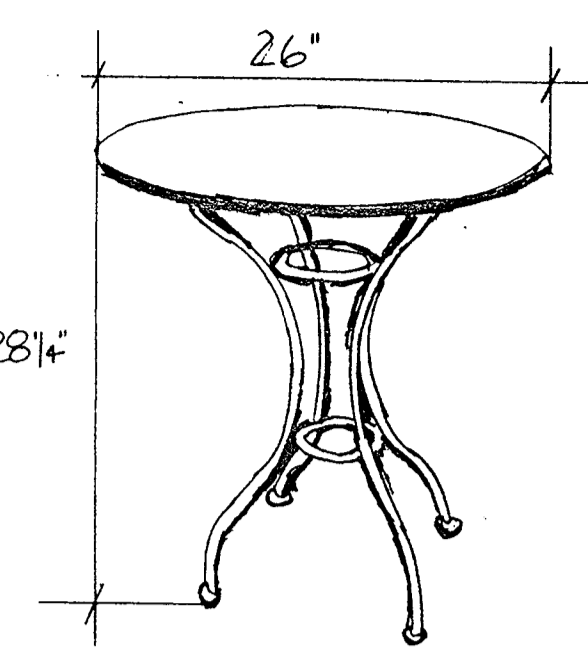
3 FRONT ELEVATION  
SCALE = 1/8" = 1'-0"



8 UMBRELLA DETAIL  
SCALE = 1/2" = 1'-0"

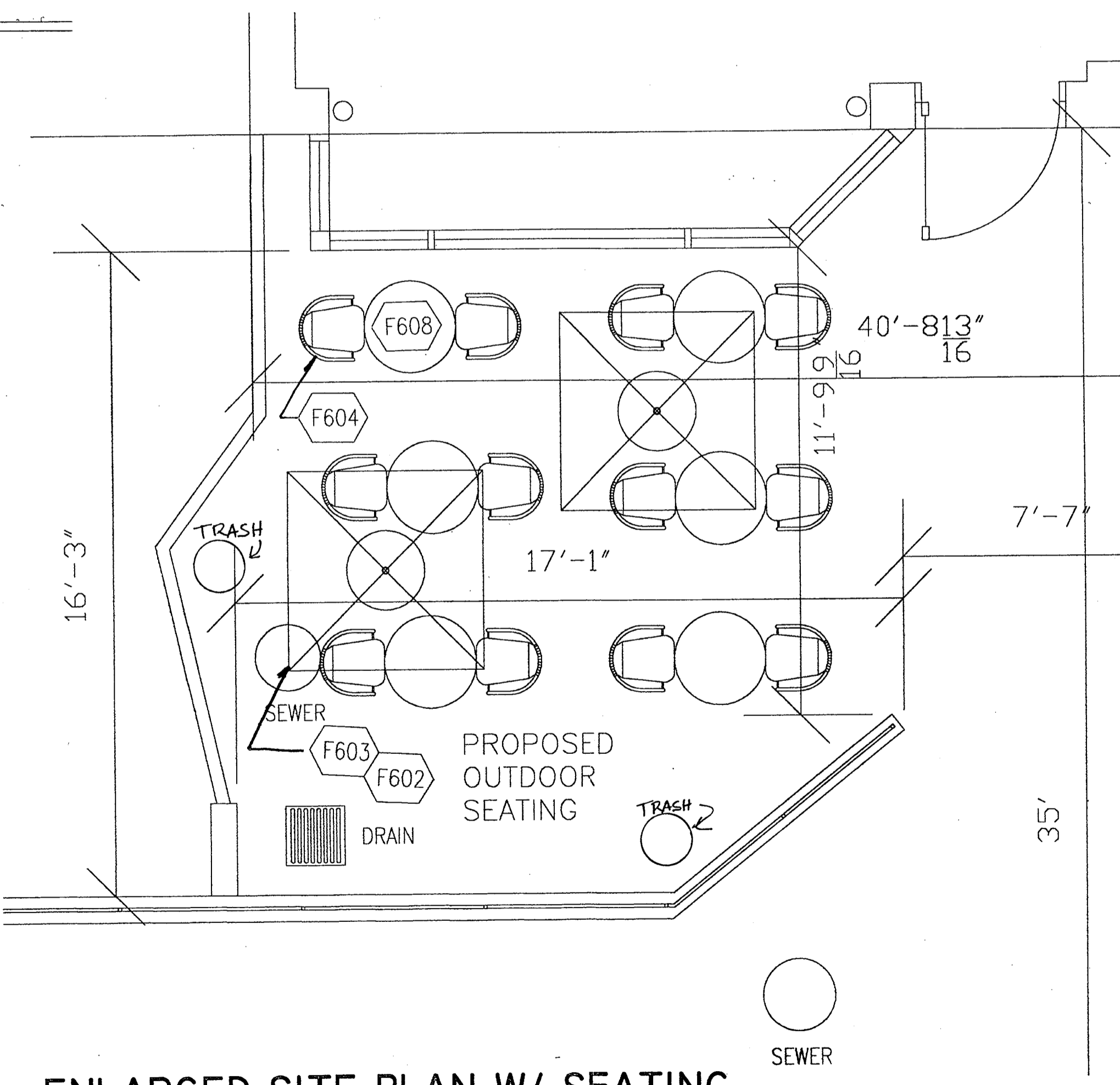
UMBRELLA SPECIFICATIONS  
TOP VENTED CANOPY  
FABRIC: GREEN FIRE RESISTANT  
HARDWOOD POLE AND SPLINES  
60" X 60" X 26-1/2" CANOPY  
OVERALL HEIGHT: 101-1/2"  
INTERIOR HEAD ROOM: 74"  
TAG: F602  
MAKER: ATA INDUSTRIES

BASE SPECIFICATIONS  
EPOXY COATED STEEL  
PRE-DRILL HOLE FOR UMBRELLA ANCHOR  
STEEL ANCHOR PIN  
DIAMETER: 24"  
HEIGHT: 15"  
75 POUNDS  
TAG: F603  
MAKER: ATA INDUSTRIES



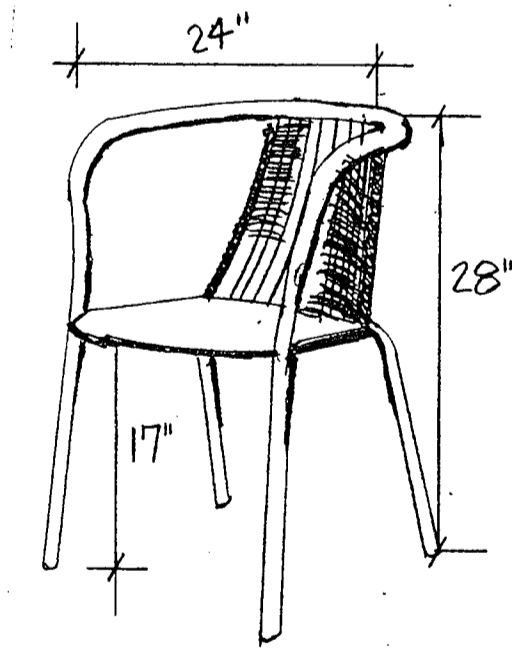
7 TABLE DETAIL  
SCALE = 1/2" = 1'-0"

SPECIFICATIONS  
TOP  
OVERALL DIAMETER - 26"  
COLOR - GREEN POWDER COAT  
LEGS:  
FOOT PATTERN - 26" OUTSIDE DIAMETER  
COLOR - DULL METAL  
OVERALL HEIGHT - 28 1/4"  
TAG: F608  
MAKER: WEST COAST INDUSTRIES



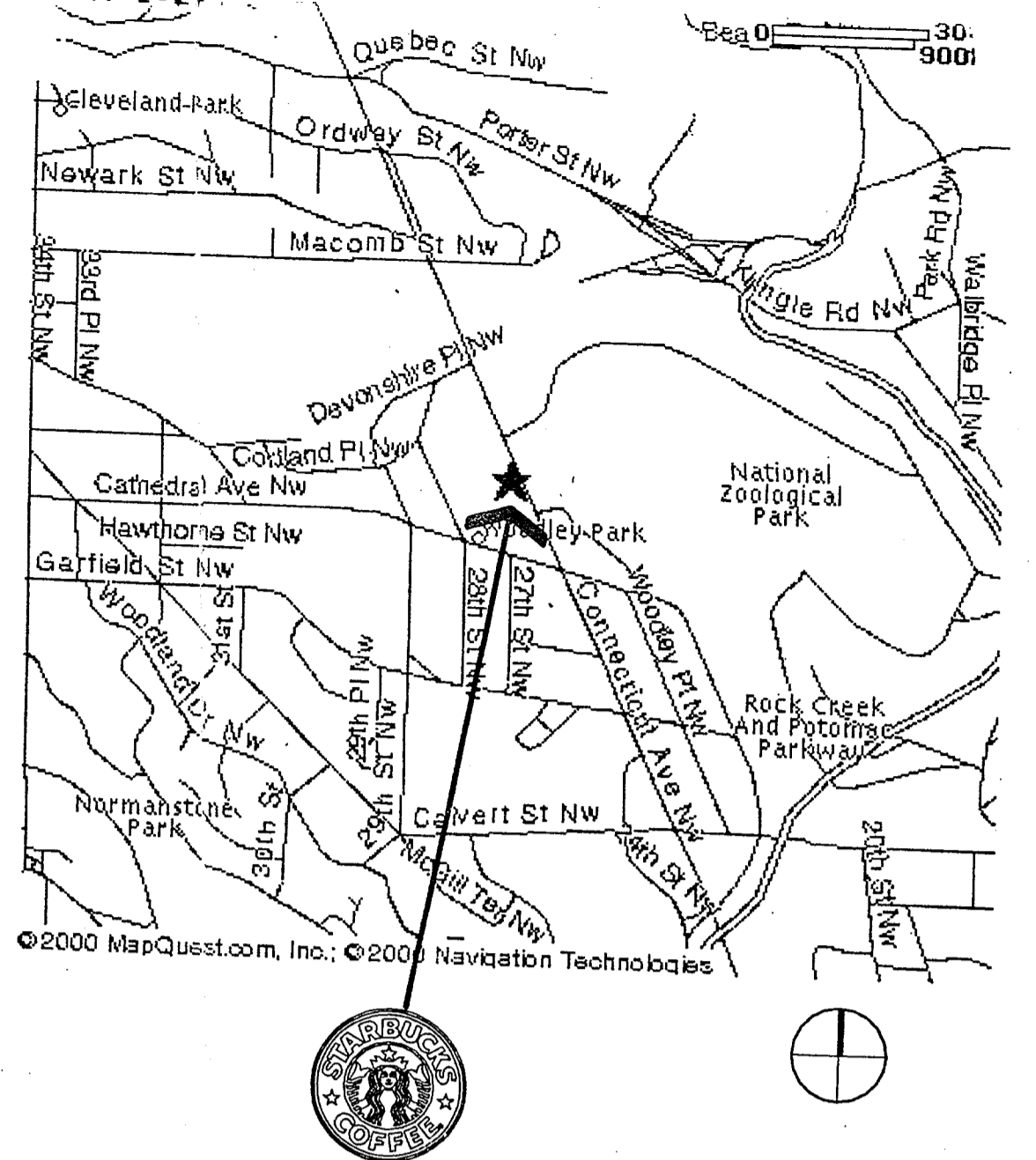
5 ENLARGED SITE PLAN W/ SEATING  
SCALE = 3/8" = 1'-0"

DECA  
DEPARTMENT OF ENVIRONMENTAL AND PLANNING  
HISTORIC PRESERVATION DIVISION  
CONFORMS WITH MAYOR'S AGENT APPROVAL UNDER D.C. LAW 2-144.  
BY: [Signature] 5/28/2001  
No additional wells or fixed structures



SPECIFICATIONS  
COLOR: GREEN  
STACKABLE 14 GAUGE FRAME  
PVC EPOXY FINISH  
PVC - COATED STEEL WIRE STRAPPING  
DIMENSIONS:  
SEAT HEIGHT: 17"  
WIDTH: 21"  
DEPTH: 24"  
OVERALL HEIGHT: 28.5"  
TAG: F604  
MAKER: SANDLER SEATING

6 CHAIR DETAIL  
SCALE = 1/2" = 1'-0"



1 VICINITY MAP  
N.T.S.

INDEX OF DRAWINGS

1	VICINITY MAP
2	SITE PLAN
3	FRONT ELEVATION
4	SIDE ELEVATION
5	ENLARGED OUTDOOR SEATING PLAN
6	CHAIR DETAIL
7	TABLE DETAIL
8	UMBRELLA

PROPERTY DESCRIPTION

SQUARE 2106 LOT 3
TOTAL SEATING AREA: - 192.9 SQUARE FEET
TOTAL SEATS: - 12



STARBUCKS COFFEE COMPANY  
2401 UTAH AVENUE SOUTH  
SEATTLE, WASHINGTON 98134  
(206) 318-1575

THESE PLANS AND SPECIFICATIONS, AS WELL AS STARBUCKS' NAME AND LOGO, TRADEMARKS AND DESIGNS ARE THE EXCLUSIVE PROPERTY OF STARBUCKS CORPORATION. ANY REPRODUCTION, MODIFICATION, DISCLOSURE AND/OR USE OF THESE MATERIALS FOR ANY PORTION OF THEM WITHOUT STARBUCKS' PRIOR WRITTEN CONSENT IS STRICTLY PROHIBITED.

CONSULTANTS

4963 ELM  
Suite 103  
Bethesda  
Maryland  
20814-2940  
301.657.3020  
301.657.3050

REV	DATE	JC	DESCRIPTION

STARBUCKS COFFEE  
PROJECT:  
**NATIONAL ZOO**  
3000 CONNECTICUT AVENUE N.W.  
SUITES A AND B  
WASHINGTON D. C. 20008  
COUNTY:  
DISTRICT of COLUMBIA

PROJECT NO. 12170-001  
CONCEPT: EB - ROAST - RH  
ISSUE DATE: 5 SEPT 2001  
PM: TREVOR WRIGHT  
JC: DAVID ELLIS  
CHECKED: JOHN McDUGALD  
C. M. CHKD: JOHN SKROCE

SCALE: NO SCALE  
(DO NOT SCALE DRAWINGS)

SHEET TITLE

PROJECT CODE: 12170-0-01