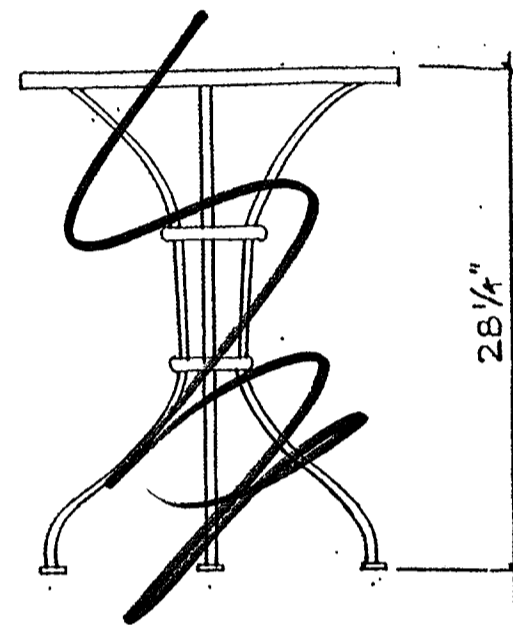
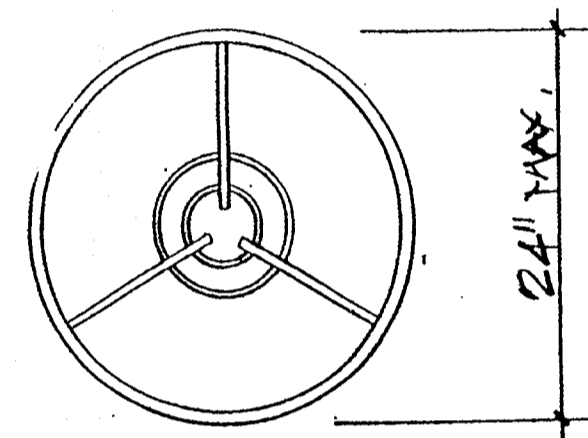


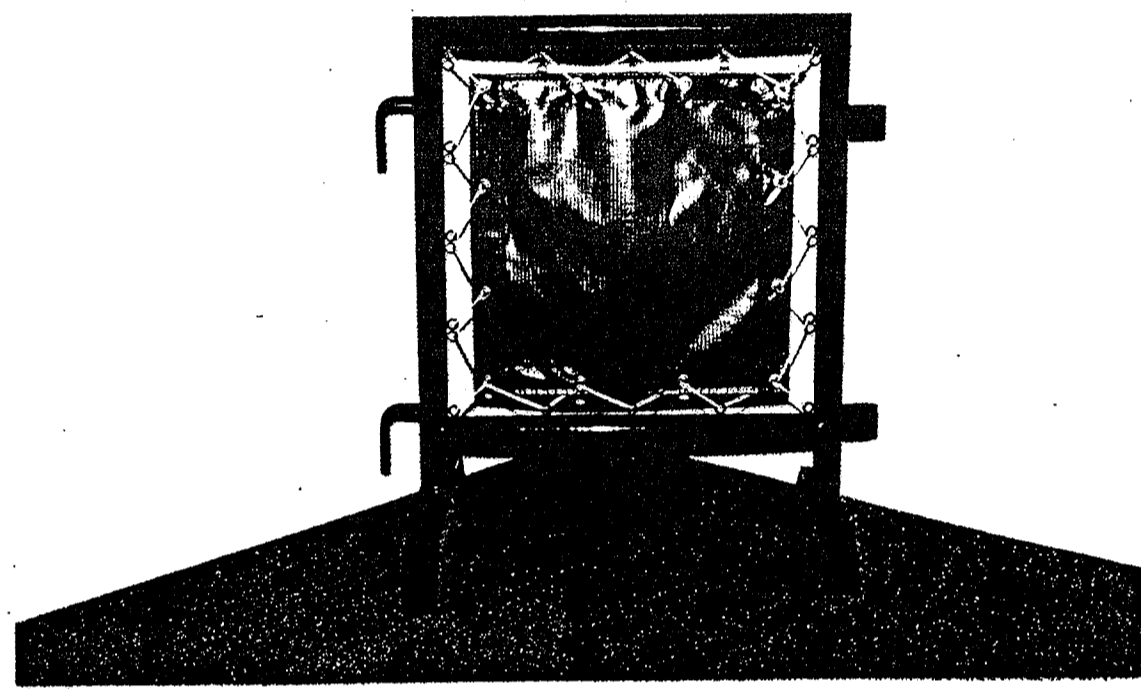
4 UMBRELLA DETAIL 1/2" = 1'-0"

15 RAILING LOGOS

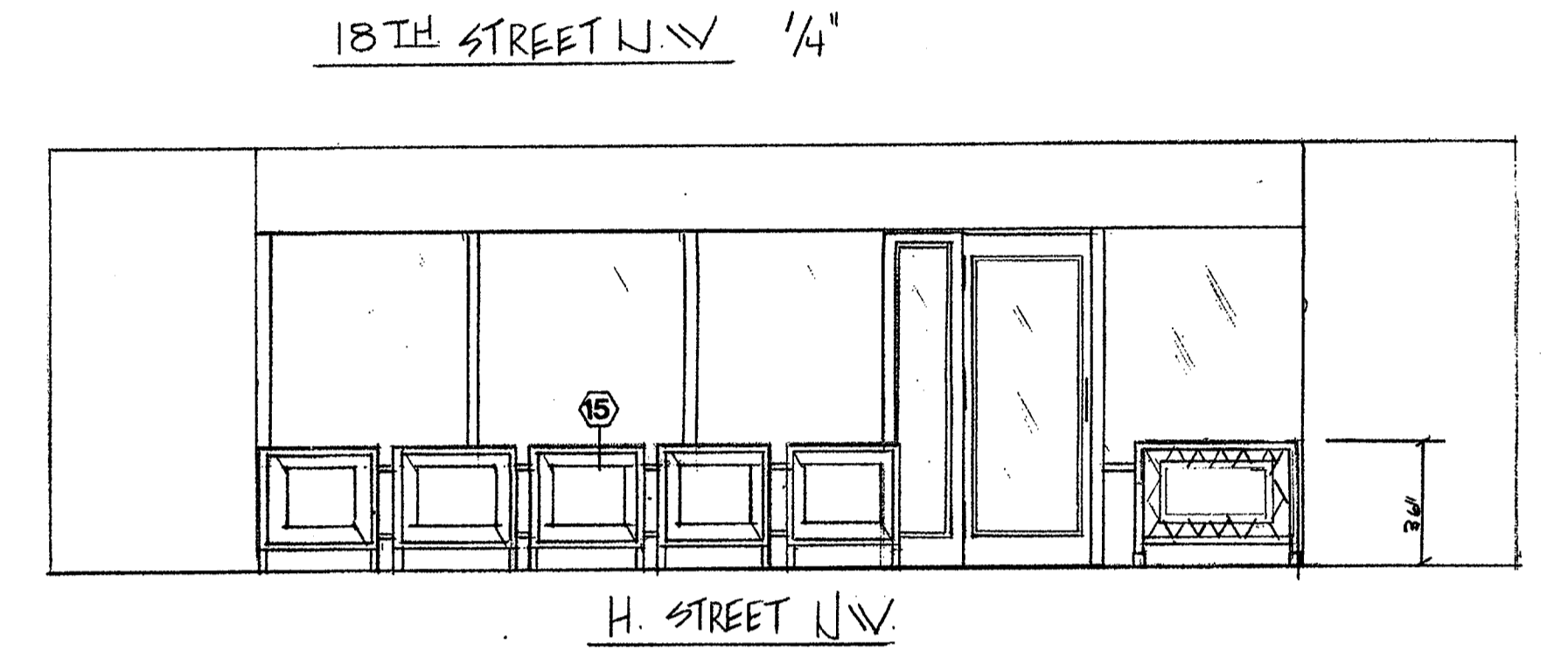
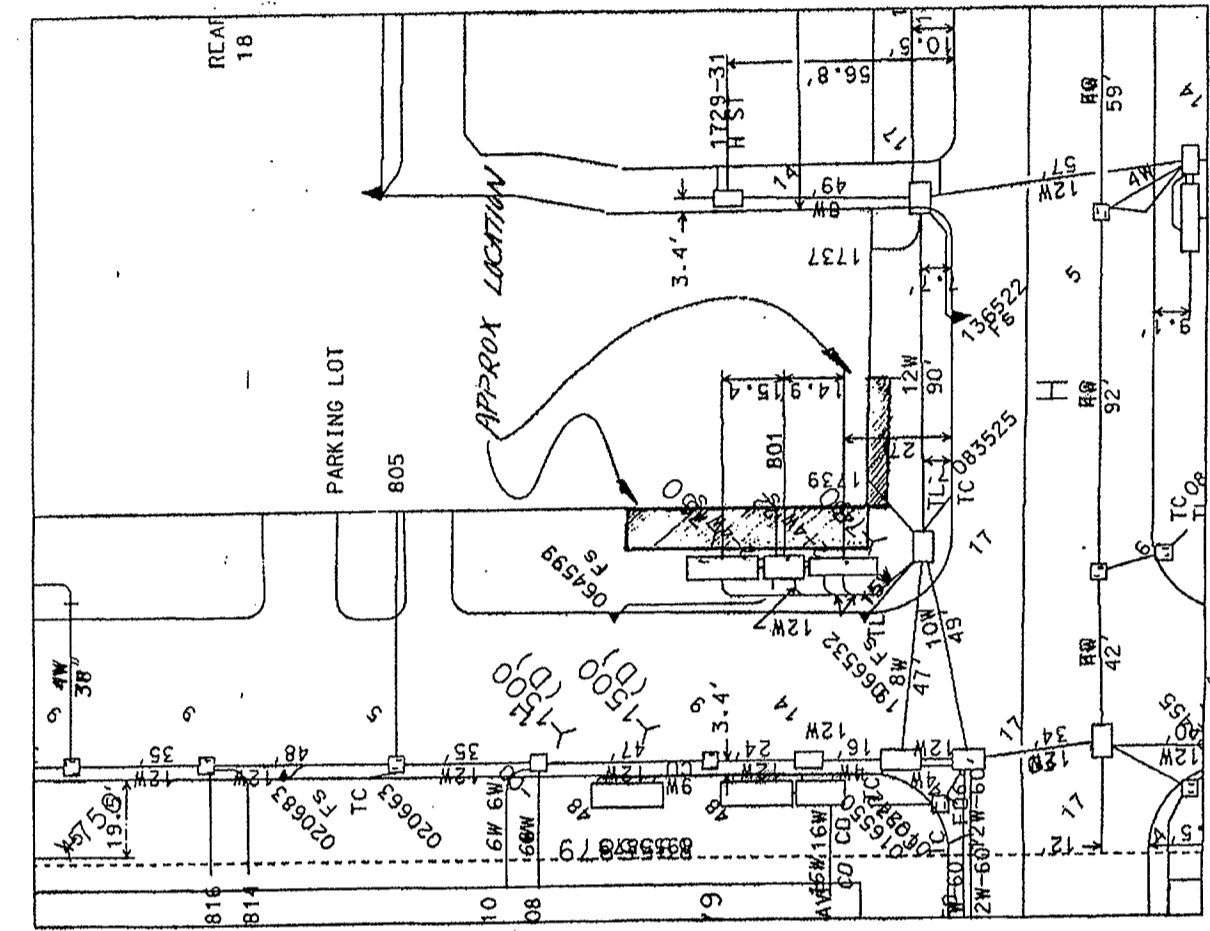


PLAN VIEW

ELEVATION VIEW



15 RAILINGS

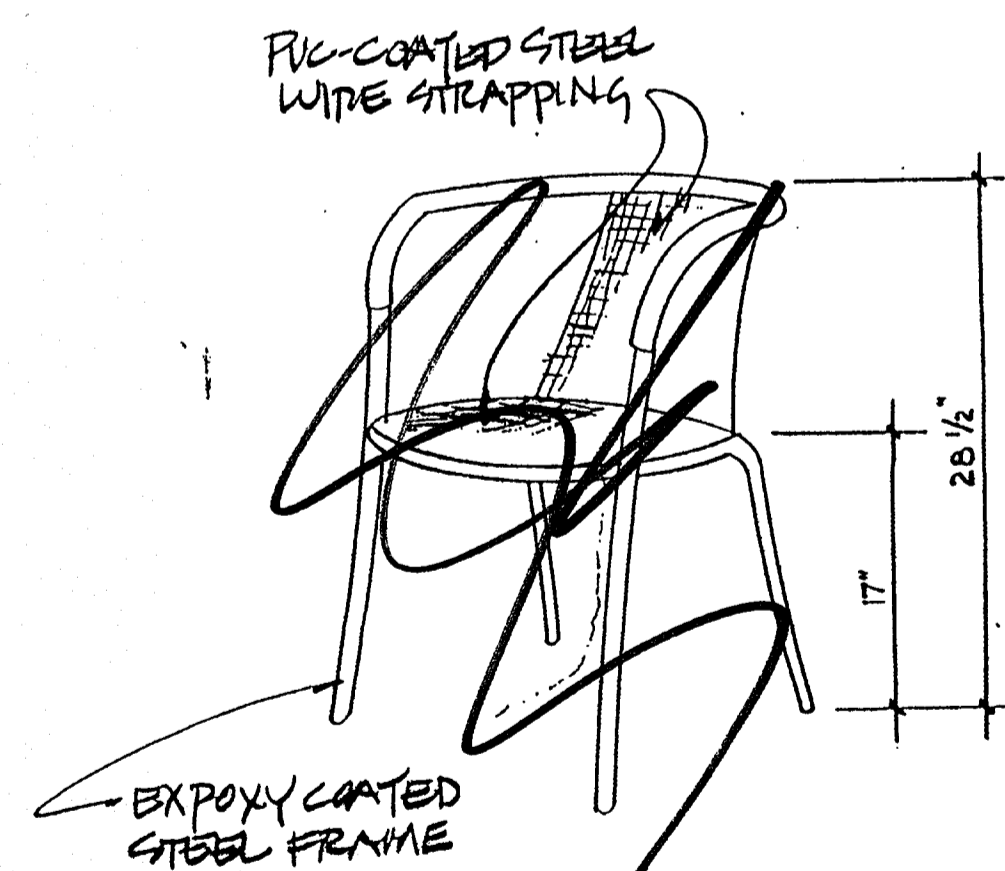


1 TABLE DETAIL (WROUGHT IRON) 1" = 1'-0"

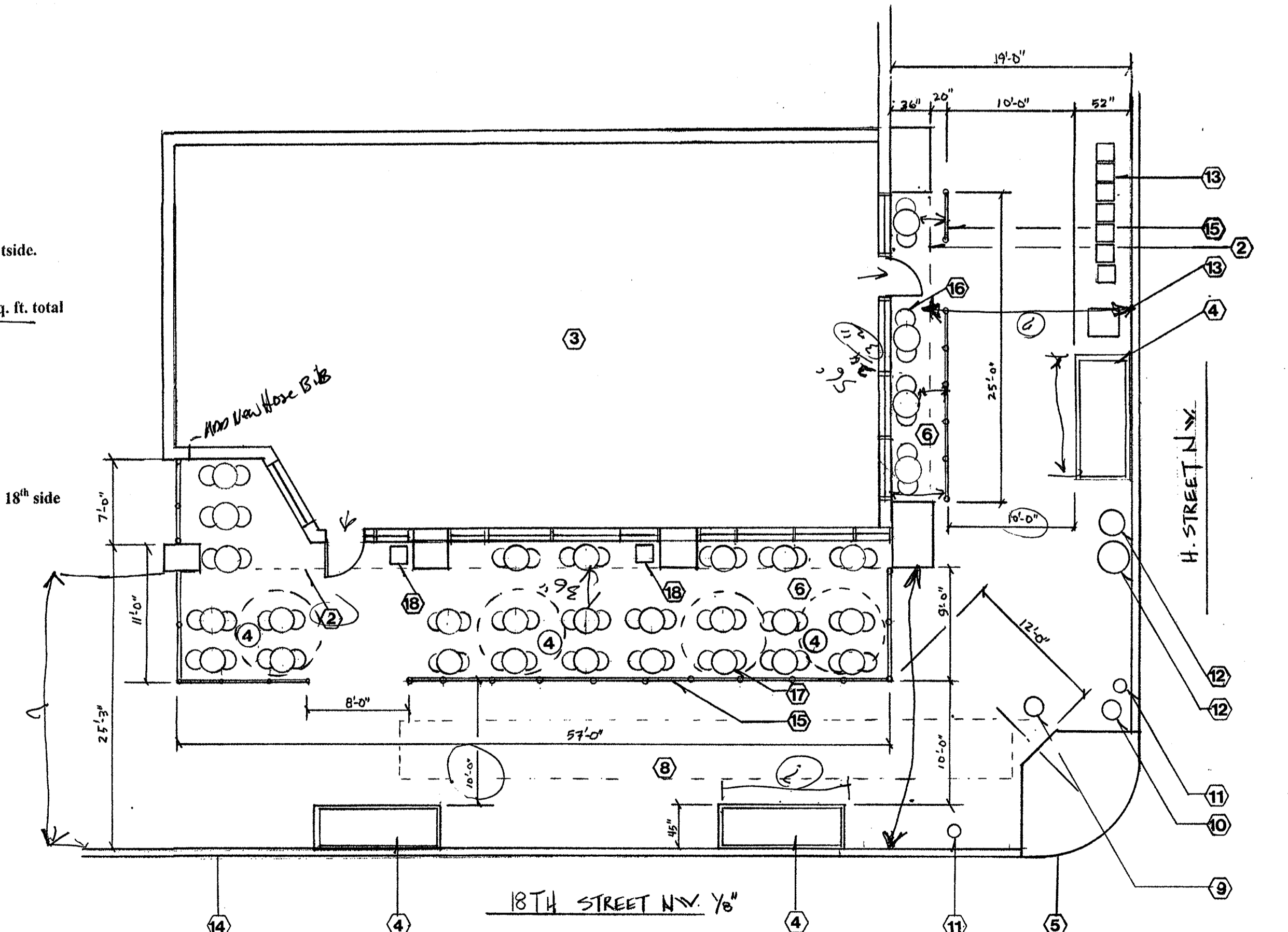
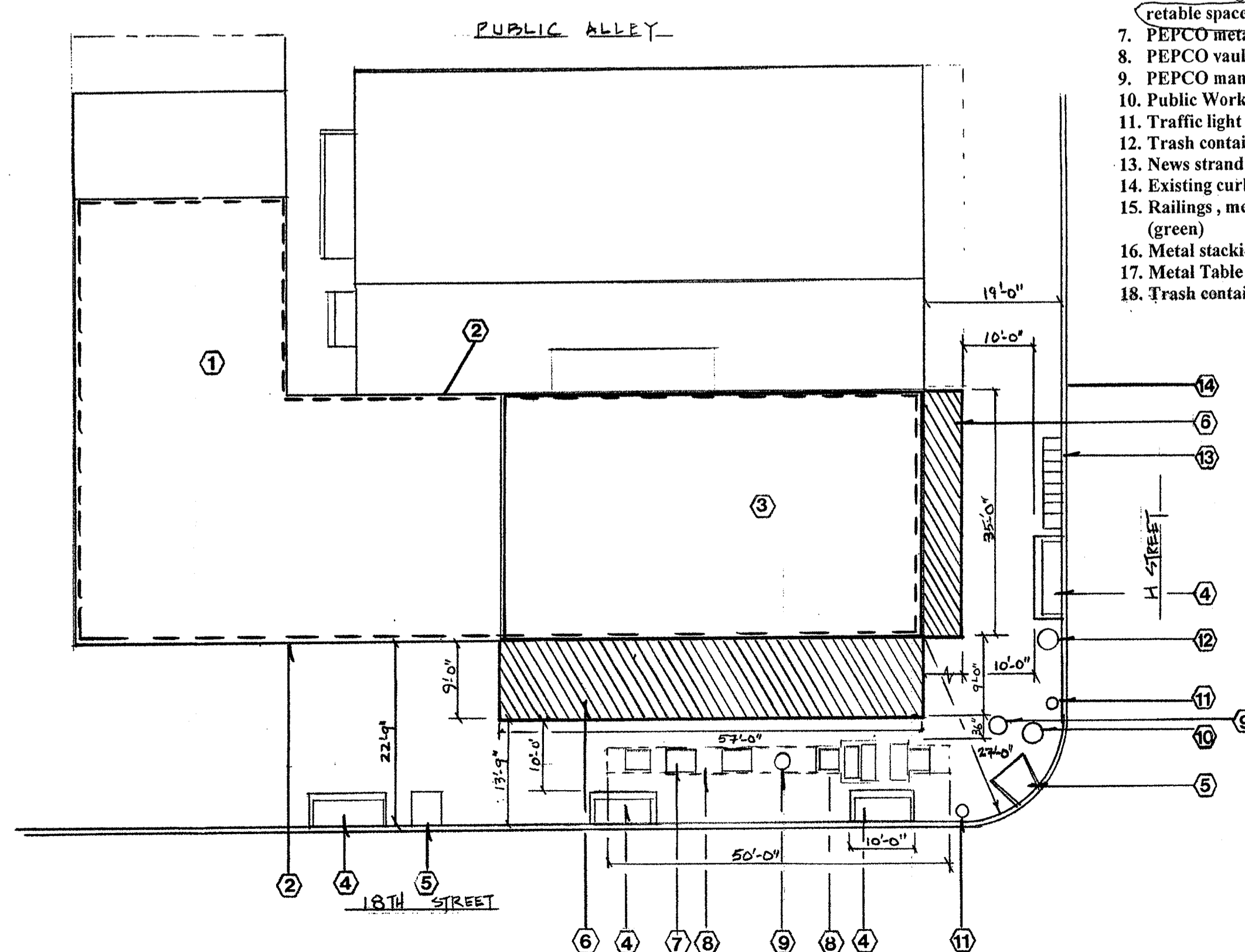
8 PEPCO - VAULTS

Legend

- 1 10 story office building
- 2 Property line
- 3 Starbucks Coffee existing unit, 42 seating capacity inside, 60 seats outside.
- 4 Tree Box
- 5 ADA handicap ramp
- 6 Café Seating unenclosed 18th St. side = 162 sq. ft.; Hth St. side = 42 sq. ft. total
retable space 204 sq. ft.
- 7 PEPCO metal grates
- 8 PEPCO vaults
- 9 PEPCO manhole cover
- 10 Public Works sewer cover
- 11 Traffic light (2)
- 12 Trash containers
- 13 News strand dispensers
- 14 Existing curbs
- 15 Railings, metal 36" high, (2) with logos on Hth side, (3) with logos on 18th side (green)
- 16 Metal stacking chairs see detail #3
- 17 Metal Table see detail #1
- 18 Trash containers (2)



3 CHAIR DETAIL 1" = 1'-0"



Restaurant Consultants Inc.
P.O. Box #1414
College Park, Maryland 20741
Phone: 301-345-9400
Fax: 301-345-8614
E-Mail: Spinell@WAM.UMD.EDU

Starbucks Coffee

801 18th Street NW

Washington, DC.