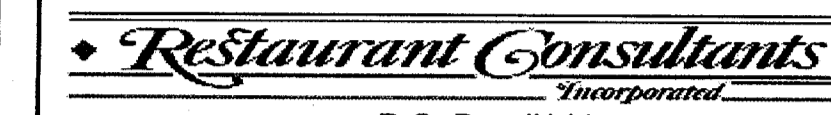




ALAN SPARBER ARCHITECT

10712 ENEWER HOUSE ROAD  
NORTH BETHESDA, MARYLAND 20852  
240.481.5017 / asparber@asaurchitect.com



P.O. Box #141  
COLLEGE PARK, MD 20741  
PH: 410.827.9002

NOTES

PROFESSIONAL SEAL

SEALED BY: ALAN SPARBER

PROFESSIONAL CERTIFICATION. I CERTIFY THAT THESE DOCUMENTS WERE PREPARED OR APPROVED BY ME, AND THAT I AM A DULY LICENSED ARCHITECT UNDER THE LAWS OF THE DISTRICT OF COLUMBIA, LICENSE NUMBER 2629, EXPIRATION DATE: 04/30/2012.

SUBMITTALS

NO.	DESCRIPTION	DATE
1	ISSUED FOR PERMIT	04/26/11
.	.	.
.	.	.
.	.	.
.	.	.

700 14TH STREET

700 14TH STREET, NW  
WASHINGTON, D.C. 20005

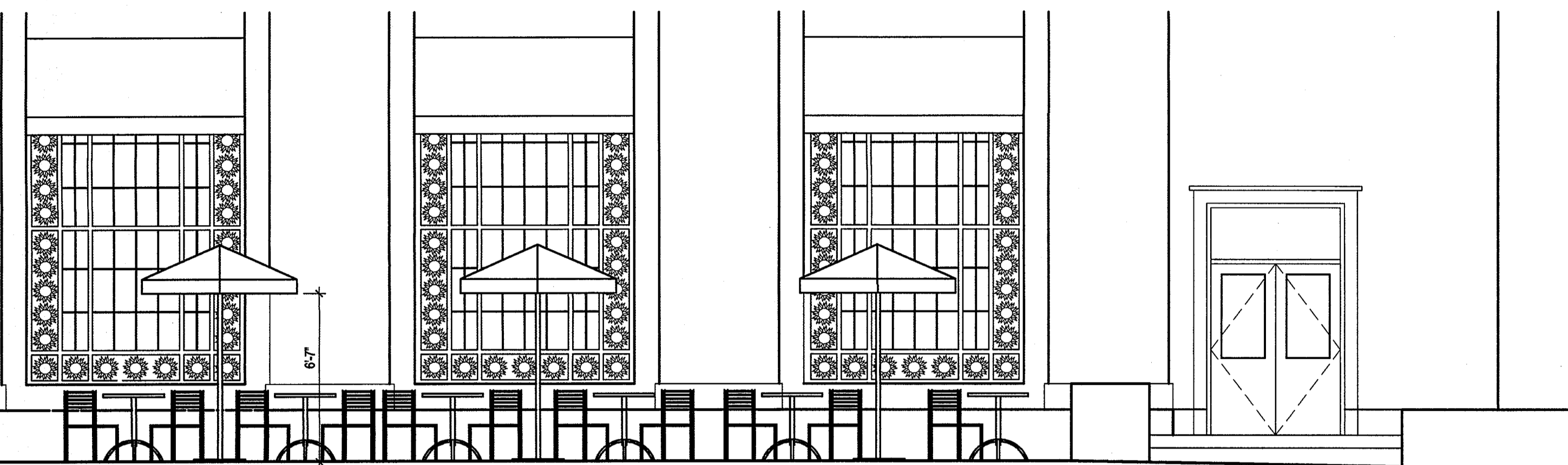
OUTDOOR SEATING PLAN

SCALE: AS NOTED  
MANAGER: AS  
DRAFTSMAN: DAS  
FILE: 716 A-1  
SHEET: 1 OF 1  
PROJ. #: SB 716

A-1

FURNITURE SCHEDULE:

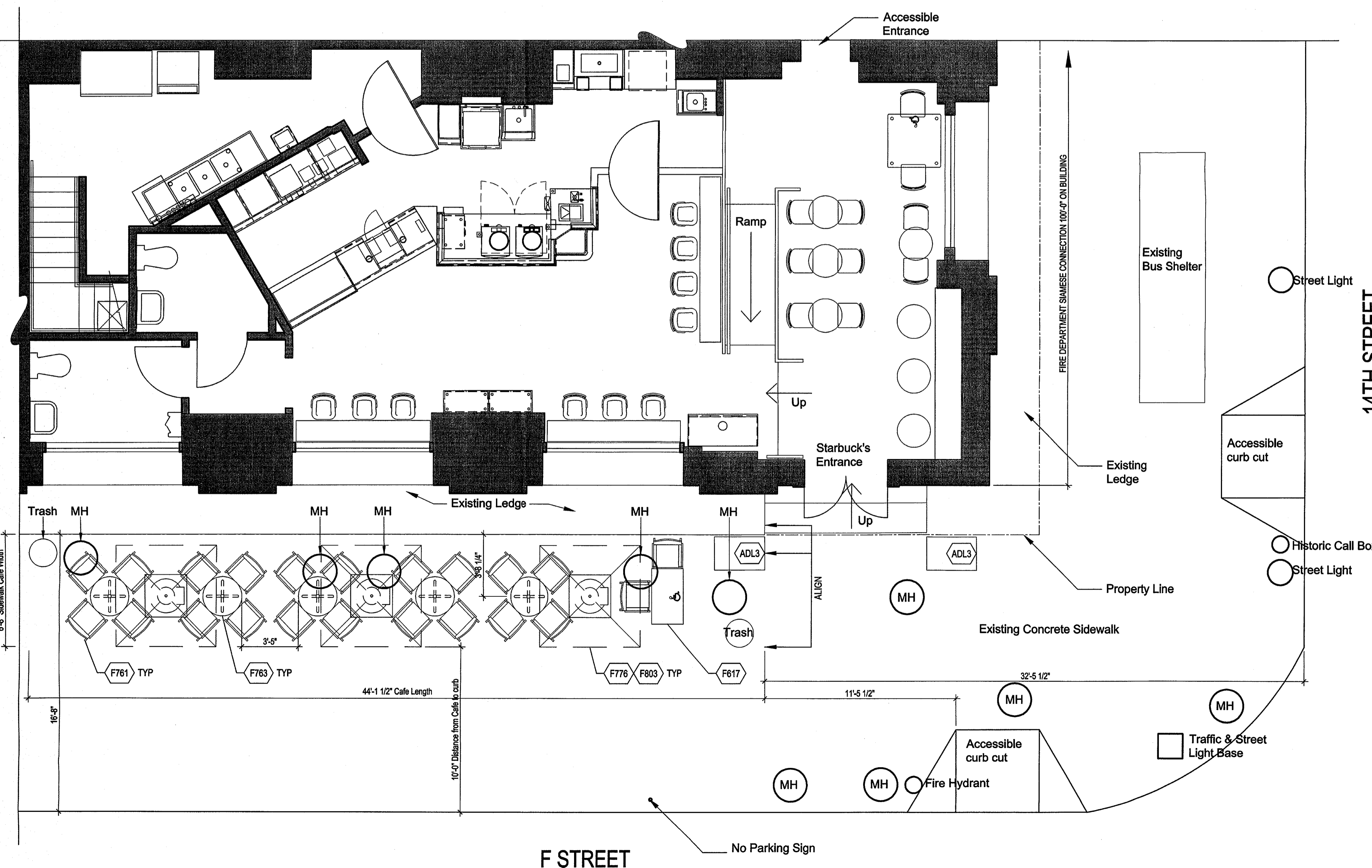
ITEM#	QTY	DESCRIPTION	MANUFACTURER	MODEL #	REMARKS	SKU #	SHIP
<b>TABLES</b>							
F763	5	TABLE PATIO ROUND METAL TOP	SMITH AND HAWKEN	896688		223250	3PL
<b>CHAIRS</b>							
F761	22	CHAIR PATIO METAL/WOVEN	SMITH AND HAWKEN	896654		223229	3PL
<b>EXTERIOR</b>							
F617	1	TABLE ADA TEXT OUTDOOR BRONZE	WEST COAST INDUSTRIES	3131 2339 BZ	ADA COMPLIANT W/ TEXT	187111	3PL
F776	3	BASE UMBRELLA 6' 95 LBS	ULTIMATE UMBRELLA CO	SBUXACF95W		223127	3PL
F803	3	UMBRELLA 6' OUTDOOR LOGO	ULTIMATE UMBRELLA CO			394001	3PL
<b>ADDITIONAL ITEMS</b>							
ADL3	2	2X3' PLANTER					GC
	2	TRASH RECEPTACLE					GC



1 ELEVATION OF EXTERIOR  
SCALE: 1/4" = 1'-0"

Chairs shown in elevation are representational. Not all chairs shown for clarity.

2 OUTDOOR FURNITURE SCHEDULE  
N.T.S.



3 EXISTING SEATING PLAN  
SCALE: 1/4" = 1'-0"

4 OCCUPANCY CALCULATIONS  
N.T.S.

EXISTING INTERIOR SEATING COUNT	
DINING	
TOTAL OCCUPANCY	23
EXTERIOR SEATING COUNT	
SQ. FOOTAGE	370 sq.ft.
DINING	
TOTAL	23
at 15 sq. ft. per person complies with code	
<b>TOTAL SEATS = 46</b>	

THESE DRAWINGS ARE THE PROPERTY OF ALAN SPARBER ARCHITECT. UNAUTHORIZED REPRODUCTION FOR ANY PURPOSE IS AN INFRINGEMENT UPON COPYRIGHT LAWS. VIOLATIONS WILL BE SUBJECT TO PROSECUTION BY FULLEST EXTENT OF LAW.